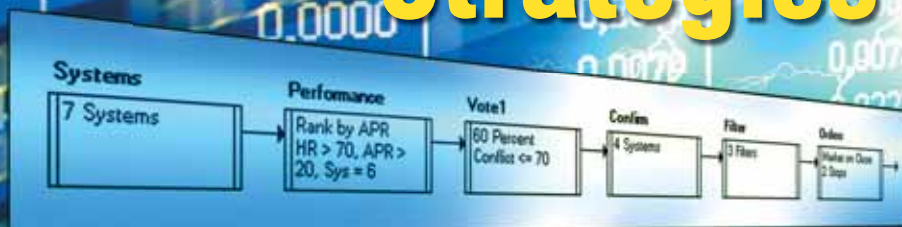


Nirvana's *Strategy Wizard*

Create Profitable Trading Strategies with Ease!



“This incredibly powerful module is going to single-handedly improve your trading!”

– Ed Downs, CEO and Founder
Nirvana Systems, Inc.

Creating Great Trading Strategies New Seminar on CD
by Jeff Drake and Jeremy Williams



INSIDE

- 2 Creating Profitable Strategies for Today's Market
- 3 Adjust Strategies for Changing Market Conditions
- 4 New Trading Ideas Come Alive
- 6 Step by Step Seminar for Creating Great Strategies
- 7 Special Introductory Offer

Creating Profitable Strategies HAS NEVER BEEN EASIER!



Ed Downs
CEO and Founder
Nirvana Systems, Inc.

To make money in today's market you need successful Trading Strategies. However, as the market changes, Strategies should be updated to stay "in tune" with the market and the list you are trading. The challenge is that the process of creating and maintaining profitable Strategies is difficult and time-consuming.

I have great news! OmniTrader users NOW have the ability to completely automate this process. After years of development, we are proud to release a module that can create, test, and tune a Trading Strategy—introducing Strategy Wizard!

Before Strategy Wizard, the typical Strategy testing process looked something like this:

1. Change a Parameter
2. Run the Focus List
3. Look at the Performance Report
4. Do we have the results we want?
5. Yes → Use the Strategy
6. No → Go to Step #1 and Repeat

This is how it has always been done. Now you can just target an existing Strategy, tell it which values in the Strategy to change and Strategy Wizard will search through the possible combinations to find the best ones—across an ENTIRE LIST of symbols.

By looking at the complete list of symbols, Strategy Wizard is tuning to the ENTIRE market. This is vastly more powerful than the symbol by symbol optimization feature currently available in OmniTrader. Once the Strategy Wizard process is complete, you will have a Strategy that is ready to trade in current market conditions. The enhanced statistics allow you to see how the new Trading Strategy is performing.

In this mailer, you will learn how Strategy Wizard improves existing Strategies and how you can easily create new ones. You simply point at the parameters in your Strategy and let Strategy Wizard do the rest. For example, you can now find the best Fixed Loss Stop, for ALL the stocks in the Russell 1000—automatically. Or, you can figure out the best Moving Average value for ALL symbols in ANY list.

Not only can you find the best values for ANY parameter(s) in your Strategy, you can determine how robust the solution is. This incredibly powerful module is going to single-handedly improve your trading—it's that good.

We developed Strategy Wizard for our own internal use, as we are constantly creating Strategies for our customers. But after visiting with our users, we realized the module has wide appeal for serious traders, so we are making Strategy Wizard available to our customers.

Strategy Wizard comes with our 100% Iron Clad 90 Day Money Back Guarantee. You are going to be amazed at how much Strategy Wizard can improve existing Strategies, and more importantly, your trading results.

Sincerely,



Ed Downs
CEO and Founder
Nirvana Systems, Inc.



The **POWER** of **Strategy Wizard**

CREATE, TEST, AND TUNE PROFITABLE TRADING STRATEGIES WITH EASE!

Designed to automate as much of the Strategy design process as possible, Strategy Wizard can be used to create new Strategies and improve existing ones.

Let Strategy Wizard Create *the Magic*

As a student of the market, you may read a concept in a magazine or hear about one in a seminar that you want to try, but you are not sure how to put it together.

Using OmniTrader, you can quickly create a Strategy with a few Trading Systems, a Filter, a Confirmer and an Exit method. Or, alter one that is already there. Then, let Strategy Wizard work on your creation to find the “magic” in it. If there is a good Strategy inside your idea, Strategy Wizard can find it!

Tune Your Strategies to YOUR List!

Strategies are typically tested on standard lists like the S&P 100. If you are trading stocks in the Russell 1000, your Stops will be better if you tune your Strategies to that list. If you are trading highly volatile stocks for Options plays, you will want your Trading Systems to fire more often, and hence will want your Strategy Filters to be looser.

But you don't have to figure this out because Strategy Wizard can do it! You can set Strategy Wizard to seek out the best values for EVERYTHING in a Strategy. Even if you adjust 5 or 10 variables in your Strategy, Strategy Wizard can find the best combination in a short amount of time, thanks to the amazing FAST SEARCH algorithm built into its logic.

Perform Periodic Tune-Ups to Adjust to Changing Market Conditions

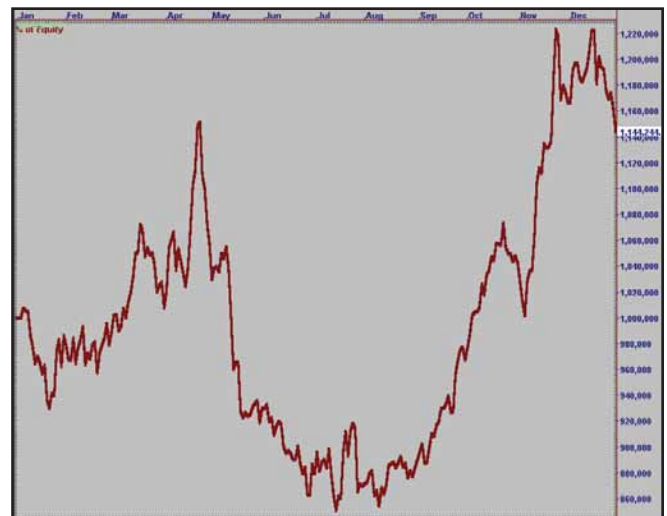
We all know that markets are not static—they are changing all the time. With Strategy Wizard, you can literally “re-tune” all your Strategies monthly or even weekly, getting the best possible parameters that reflect movement in the current market.

Since it is 100% automated, you can just fire it up every Sunday and be trading with the best of the best on Monday. What is this kind of power worth in your trading? A lot!

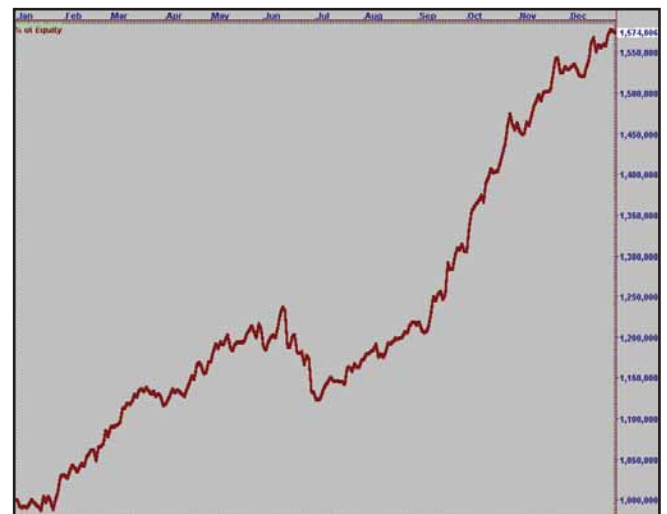
A Tale of 2 Equity Curves

We recently took one of our Turtle Plug-in Strategies and tuned it to the Russell 1000 list of stocks. Here are the two equity curves generated before and after tuning.

BEFORE TUNING:



AFTER TUNING:



Strategy Wizard was able to dramatically reduce the drawdown while improving profits by almost 400% simply by adjusting the Stops and Filters in the Strategy!

Easy to CREATE and ENHANCE Profitable

BEFORE

We started with a strategy based on one System, one Confirmer, and a few simple Stops in the Orders Block. Its original performance is shown to the right (not profitable).

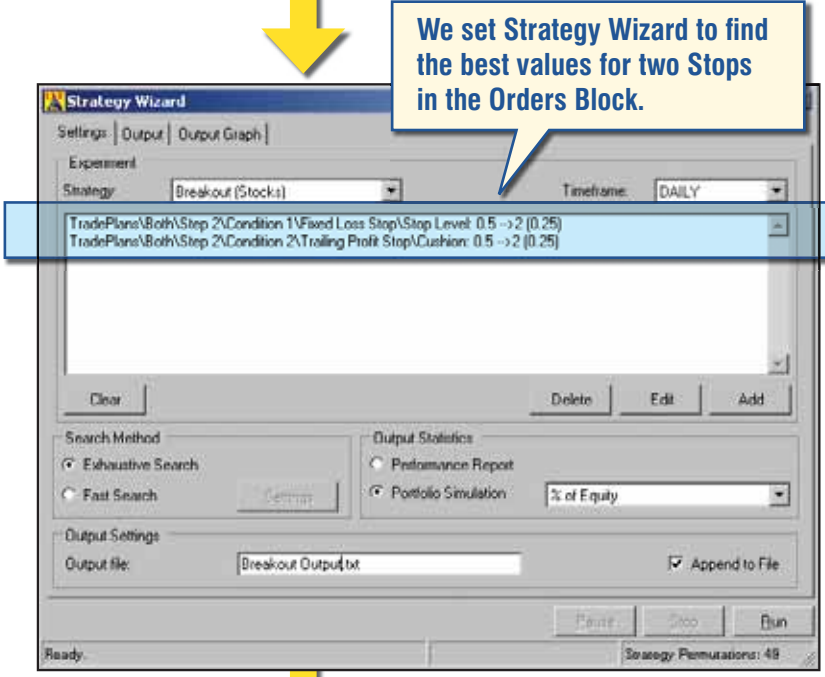
Statistic	Back Test	Forward Test
Num. of Trades	129	269
Profitable Trades	46	124
Avg. Hit Rate	35.66	46.10
Profit Per Trade (%)	-1.01	-0.12

THE MAGIC OF STRATEGY WIZARD

To demonstrate the power of Strategy Wizard, we created a very simple Strategy using the MAC-M System confirmed by the VTY-B System, with a Fixed Loss Stop and Trailing Profit Stop. The Strategy, as created, generated a Hit Rate of just 46% and an average loss of 0.12% per trade.

We then asked Strategy Wizard to find the best Stop Values to use by testing across the entire S&P 100 list. The results are amazing, but typical of what Strategy Wizard can do. After “tuning” the exits, the Strategy generated a Hit Rate of over 72% and an average Profit per Trade of 0.84%.

We set Strategy Wizard to find the best values for two Stops in the Orders Block.



AFTER

After applying Strategy Wizard to this Strategy, our Hit Rate and Profit per Trade improved dramatically, making the Strategy profitable. We also end up with a Strategy that has been tuned for the current market on the list we want to trade!

Statistic	Back Test	Forward Test
Num. of Trades	131	283
Profitable Trades	88	204
Avg. Hit Rate	67.18	72.08
Profit Per Trade (%)	0.10	0.84

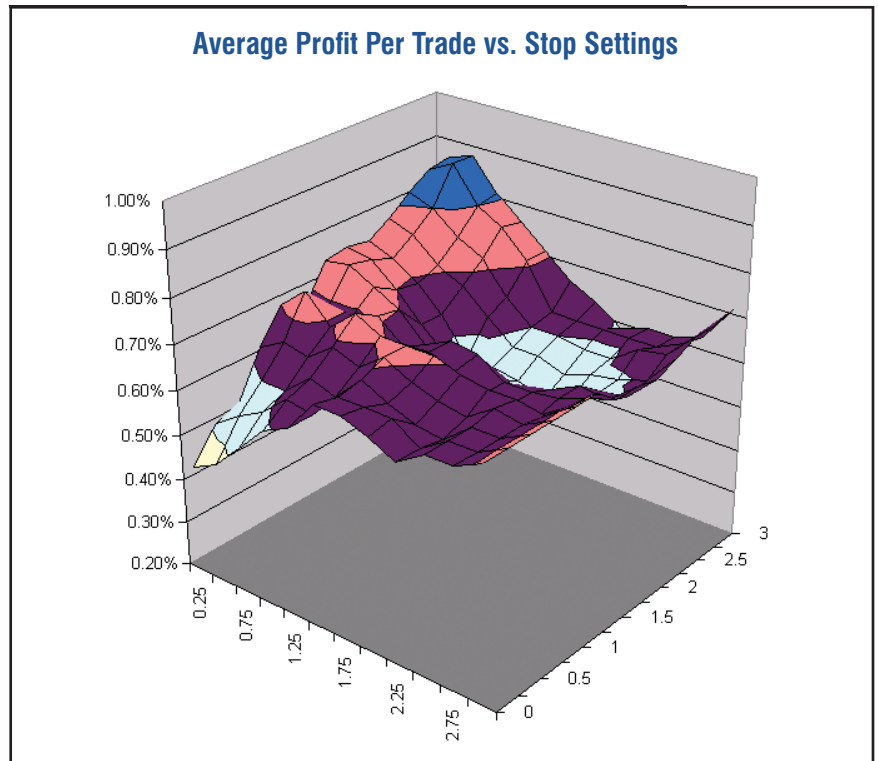
Strategies

Strategy Wizard Finds Robust Solutions

When improving or creating Strategies, we want to make sure we arrive at a robust solution. For example, if we choose a value for a Stop Loss or Trailing Profit Cushion based on Profit per Trade, we want to make sure we are not using a single value that happened to work. How do we do this? By looking at values AROUND the solution.

A simple surface plot is generated by Strategy Wizard to provide this information. By plotting Profit per Trade against two variables (like Fixed Loss Stop and Trailing Profit Cushion) we can see if the values are profitable around the solution we will use for our trading.

Reading these plots is easy—we show you how in our comprehensive Strategy Wizard seminar, described on page 6.



Strategy Wizard shows plots that tell you if a solution is robust. If the curve is smooth, it is likely you have a solution that will hold up over time.

FAST SEARCH ALGORITHM

Strategy Wizard comes with two Search Modes—Exhaustive and FAST SEARCH. Exhaustive searches EVERY possible combination of your parameters. But FAST SEARCH can converge on a solution in a fraction of the time.

In fact, you can search as many parameters as you want and the time does not increase! FAST SEARCH starts with initial trials and finds the best solution by consecutively “honing in” on a good run. An Exhaustive search might require 100,000 runs, but a FAST SEARCH can reach a good solution in as little as 100 to 200 runs.



Creating Great Trading Strategies

with

Strategy Wizard

By Jeff Drake and Jeremy Williams



Strategy Wizard is an incredible tool and it's also easy to use. In a matter of minutes you will be creating better Strategies on your list than you ever imagined possible. However, we want to arm you with all of the information you need to use Strategy Wizard as effectively as possible. This is why we have produced the *Creating Great Strategies with Strategy Wizard* seminar.

This seminar by Jeff Drake and Jeremy Williams is designed to answer the question, "How do I achieve the best possible results using Strategy Wizard?" Jeff and Jeremy go through the process of Strategy testing, and explain what you want to look for as you refine your Strategies with the module.

If you are serious about getting the most out of your Strategies, Strategy Wizard can give you the edge you have been looking for. This informative seminar will give you the knowledge you need to properly apply that edge towards greatly improved profits.



The Strategy Wizard Seminar Agenda

I. Welcome to Strategy Wizard!

- What is Strategy Wizard?

II. How to Set Up The Wizard

- Preparing a Profile for the Wizard
- Turning on Strategy Wizard

III. Understanding the Strategy Wizard Interface

- Basic Settings

IV. The Exhaustive Search Method

- The Exhaustive Search Concept
- Creating an Exhaustive Search Strategy

V. The Fast Search Method

- The Fast Search Concept
- Creating a Fast Search Strategy

VI. How to Create Winning Trading Strategies

- Analyzing the Wizard Results
- Combining Search Methods

VII. Tuning a Strategy with the Wizard

- System Tuning (Global Optimization)
- Filter/Confirmation Tuning
- Exits Tuning

VIII. How Good is Your Strategy?

- Using Out of Sample Data to Determine Robustness
- The Validation Process

IX. Final Thoughts and Additional Resources